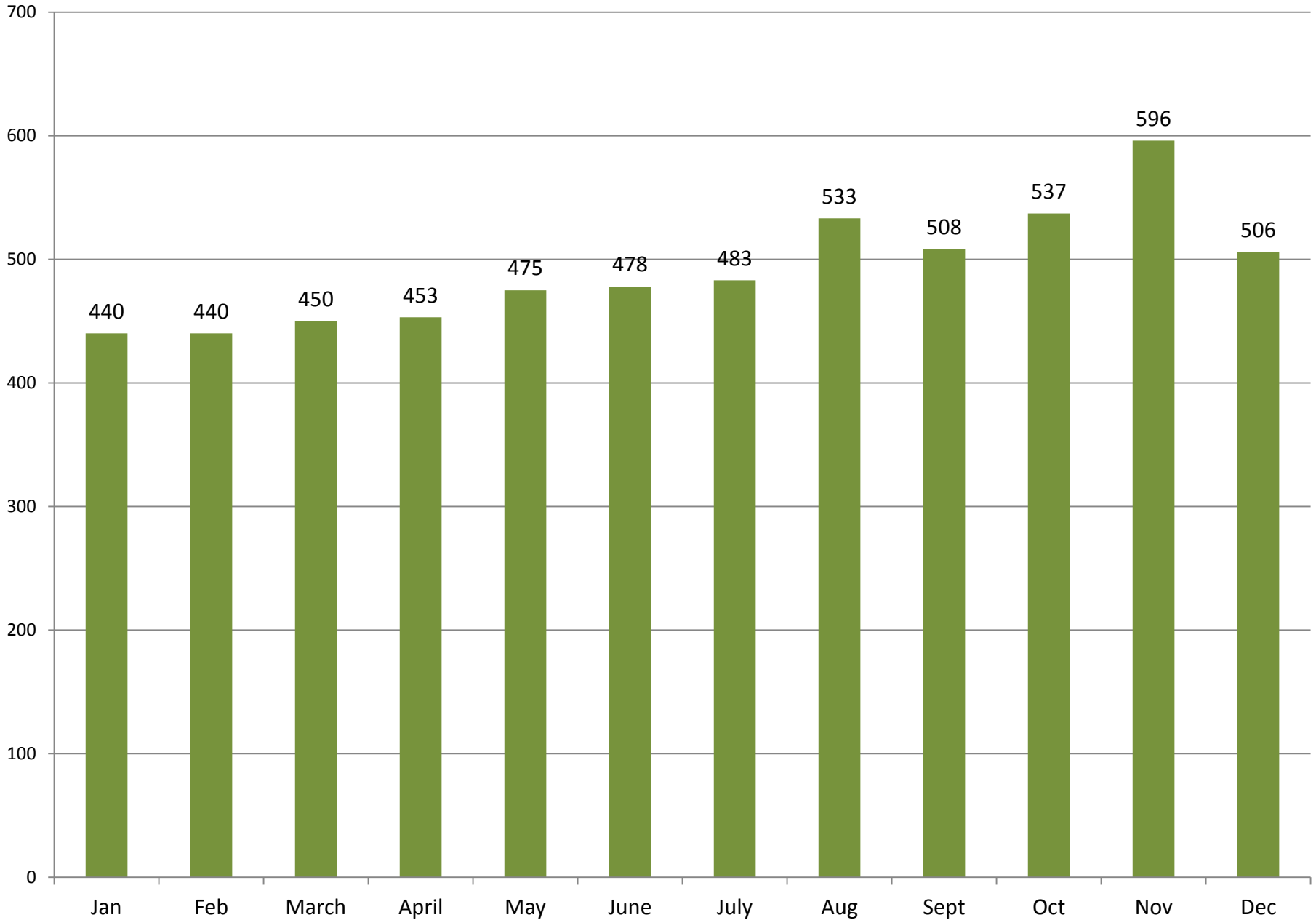
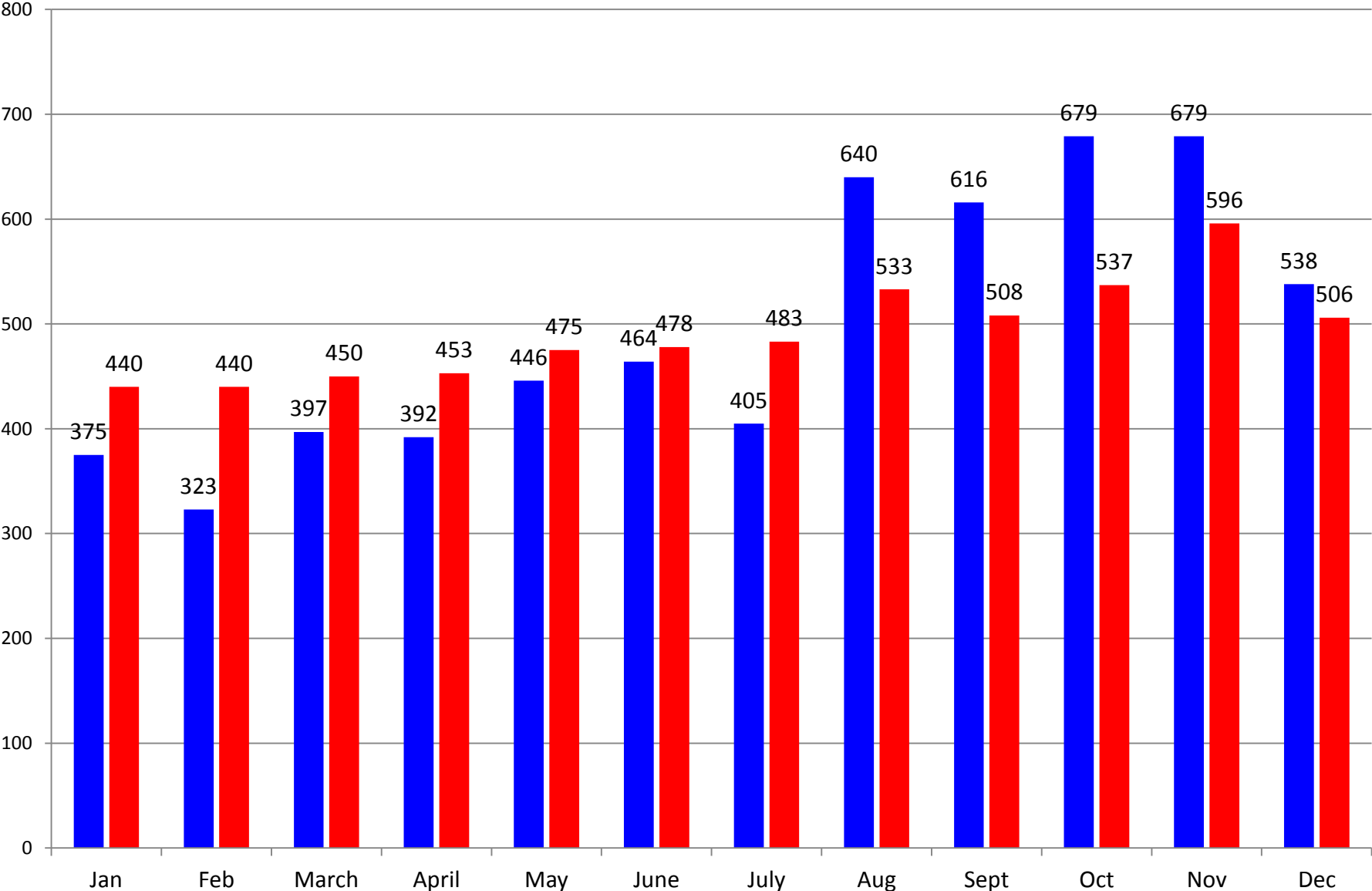


2012 FOOD BOXES BY MONTH



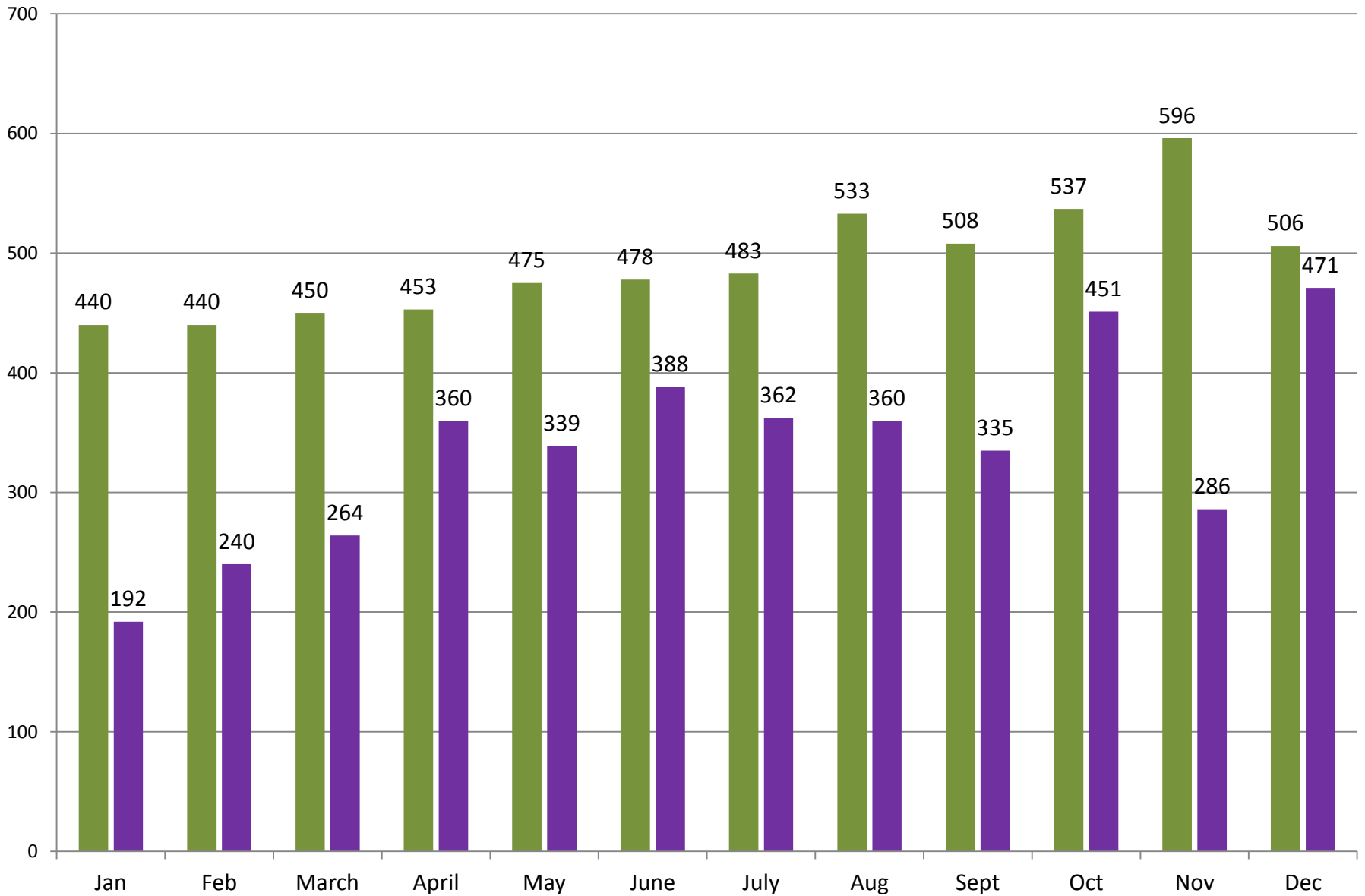
2012 FOOD BOXES BY MONTH

■ 2011 ■ 2012

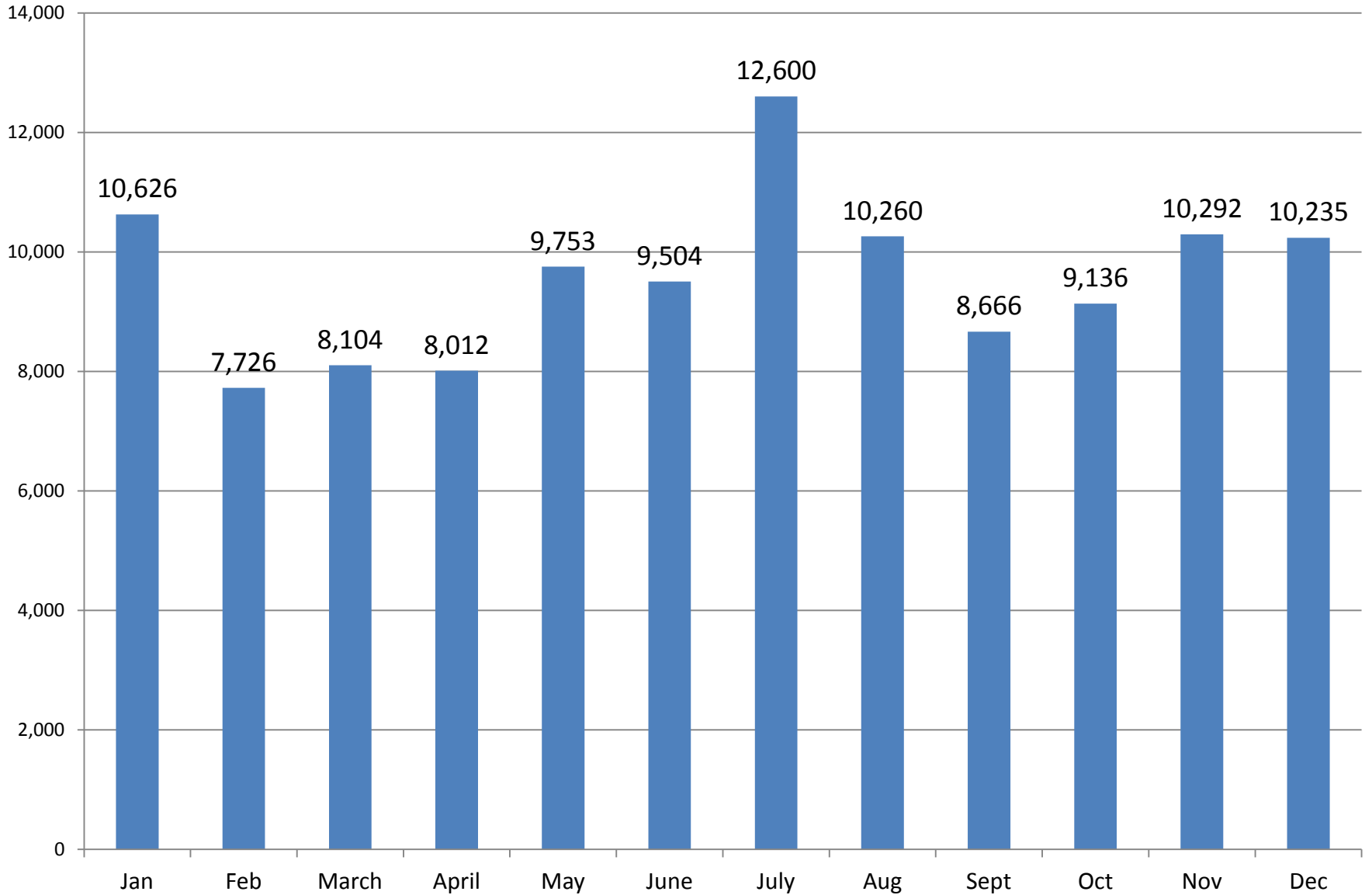


2012 FOOD BOXES & COMMODITIES BY MONTH

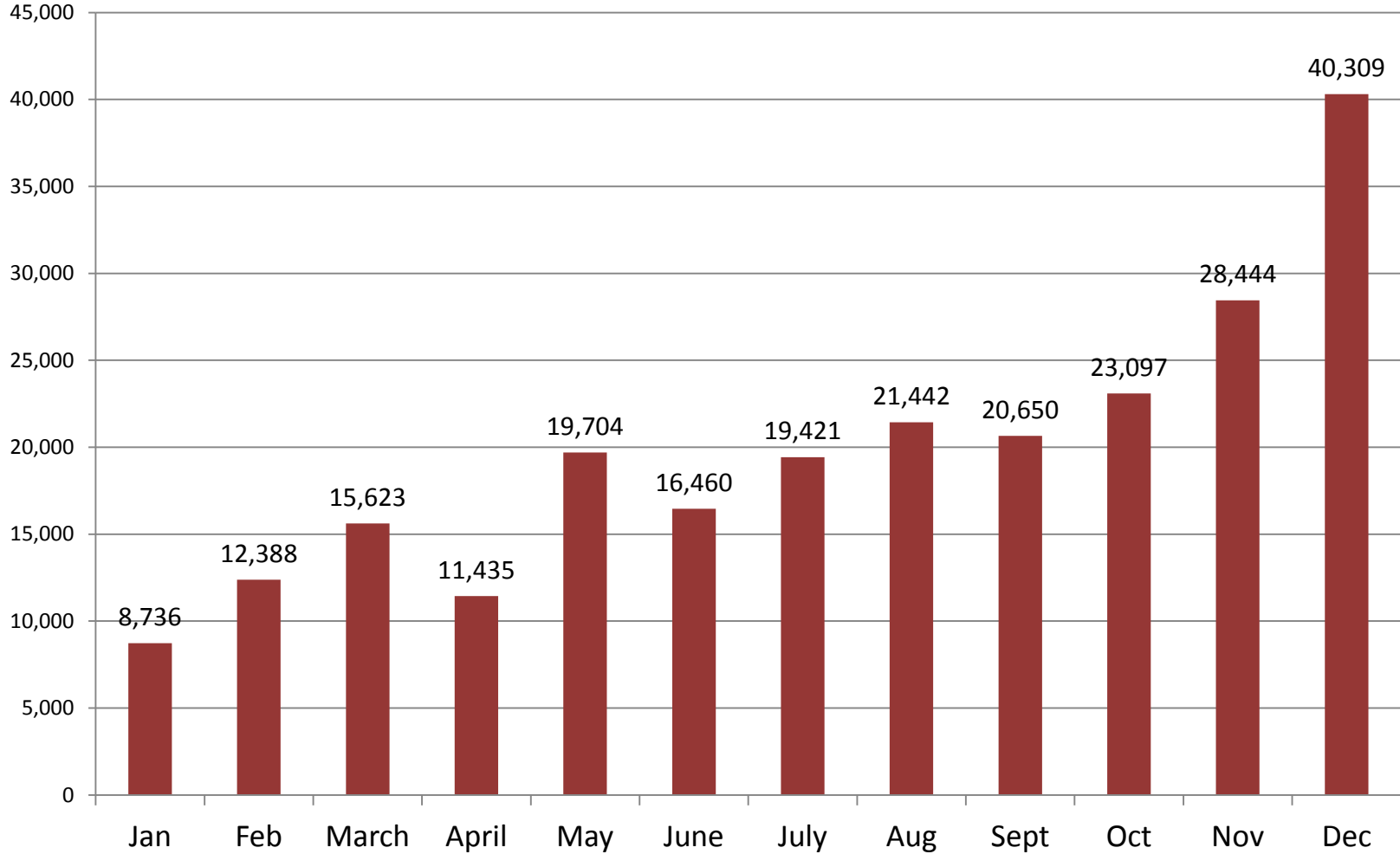
■ Food Box ■ Commodities



2012 FRESH ALLIANCE DONATED

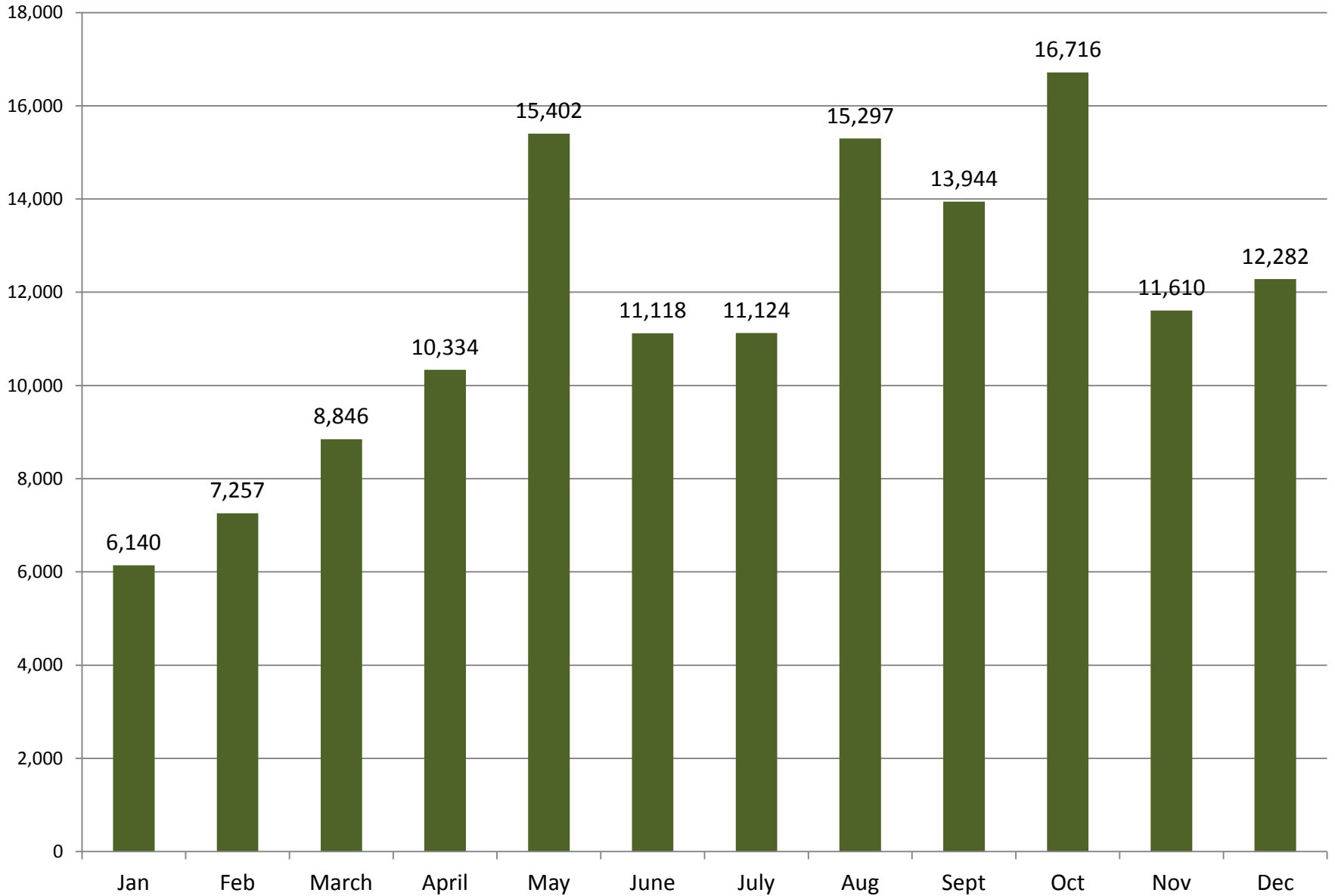


2012 FOOD DONATED

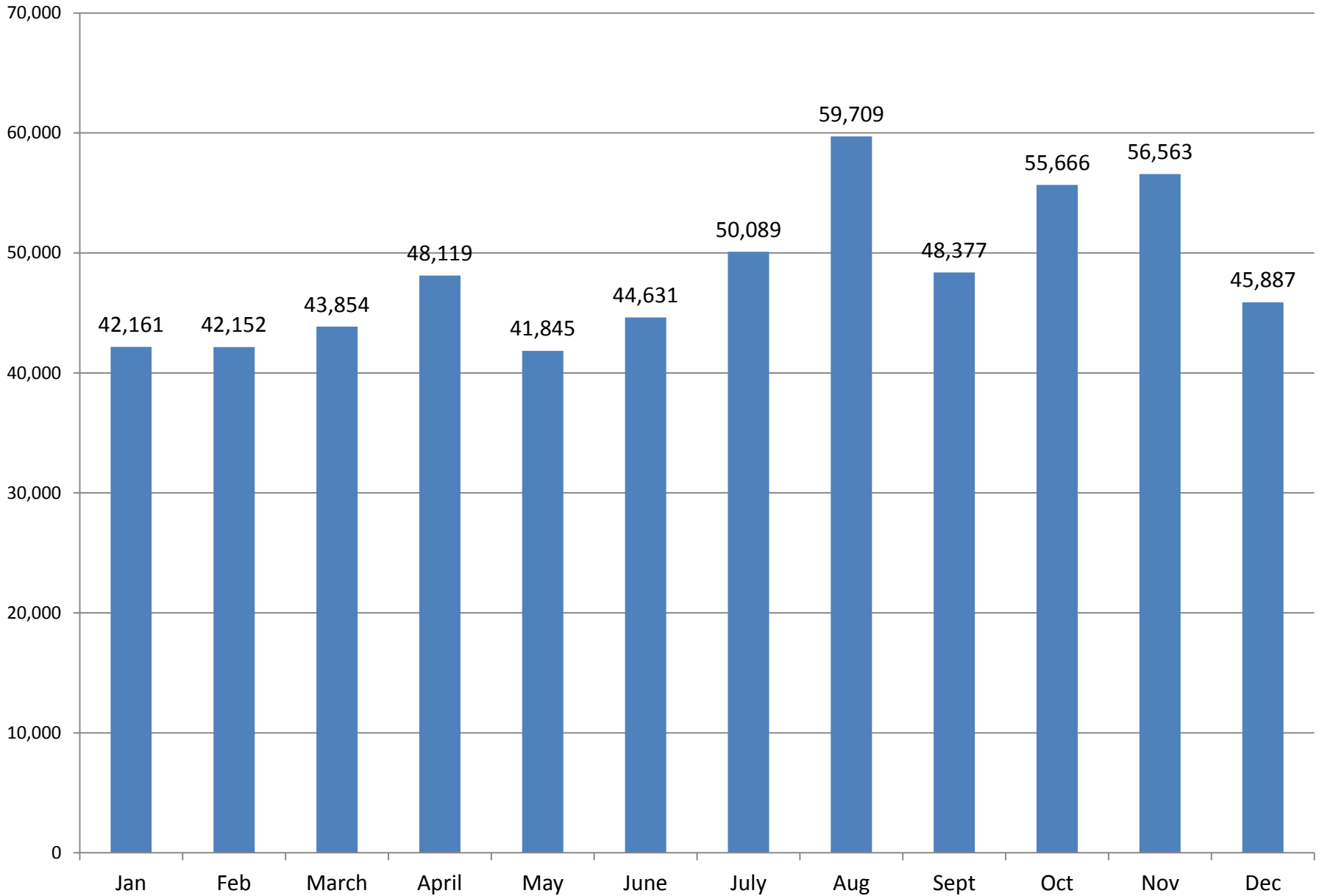


Note: Stuff the Bus and Postal carrier food drives in May, Harvest Days events in July and fresh grown produce donated by community gardeners in August & September. December spike due to holiday giving & Walk & Knock.

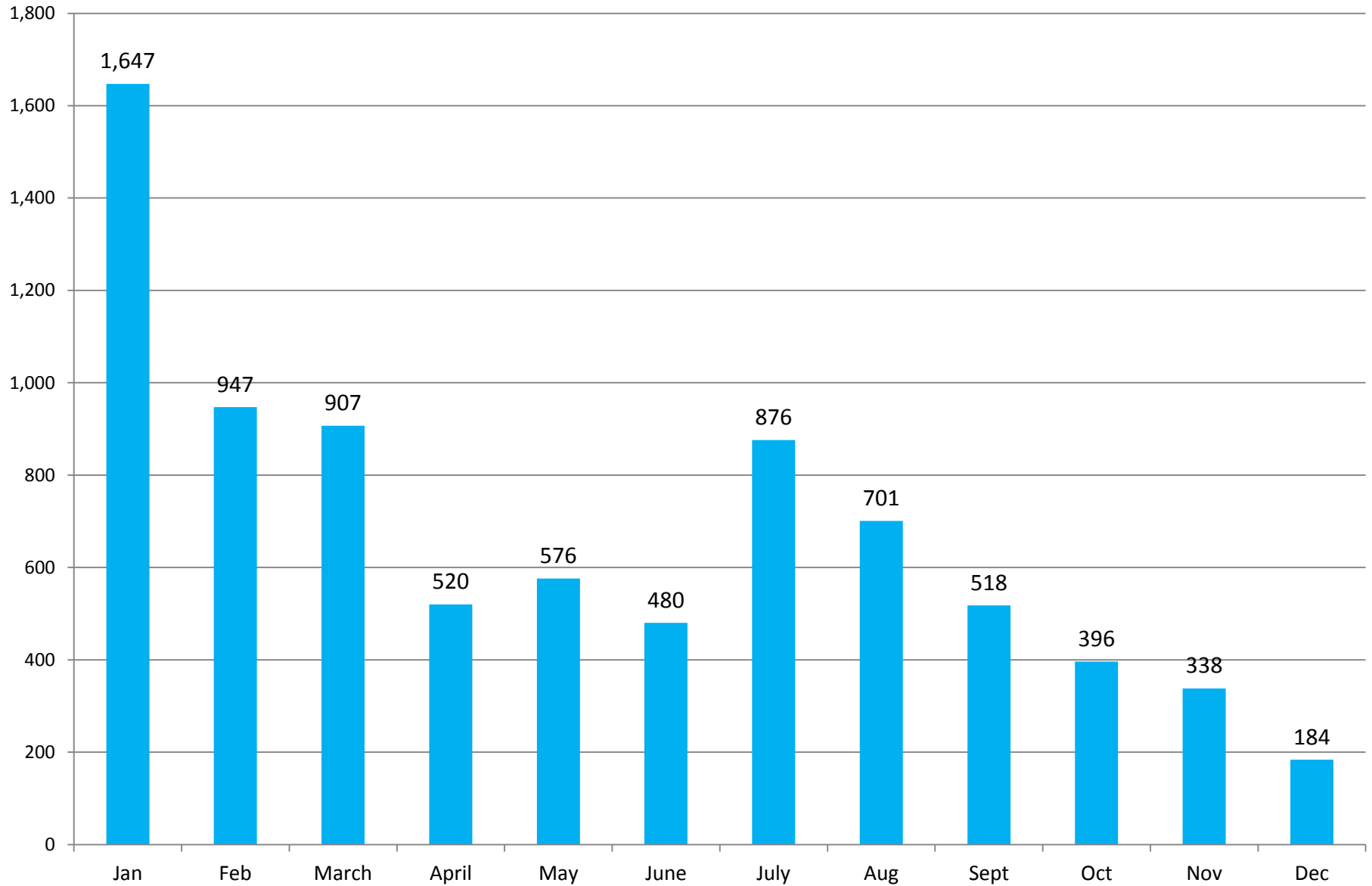
2012 FOOD PURCHASED



2012 FOOD ISSUED OUT

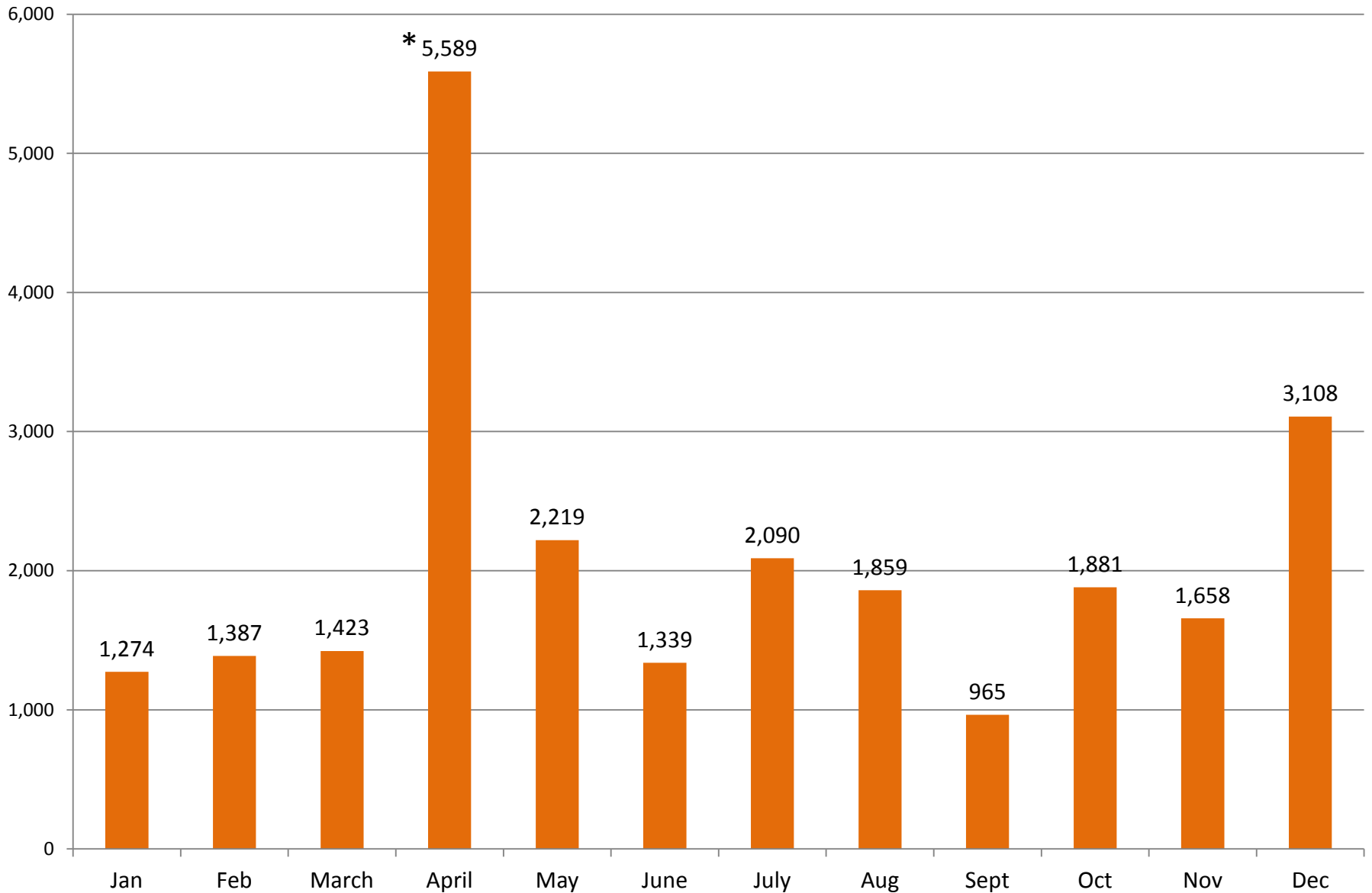


2012 WASTE



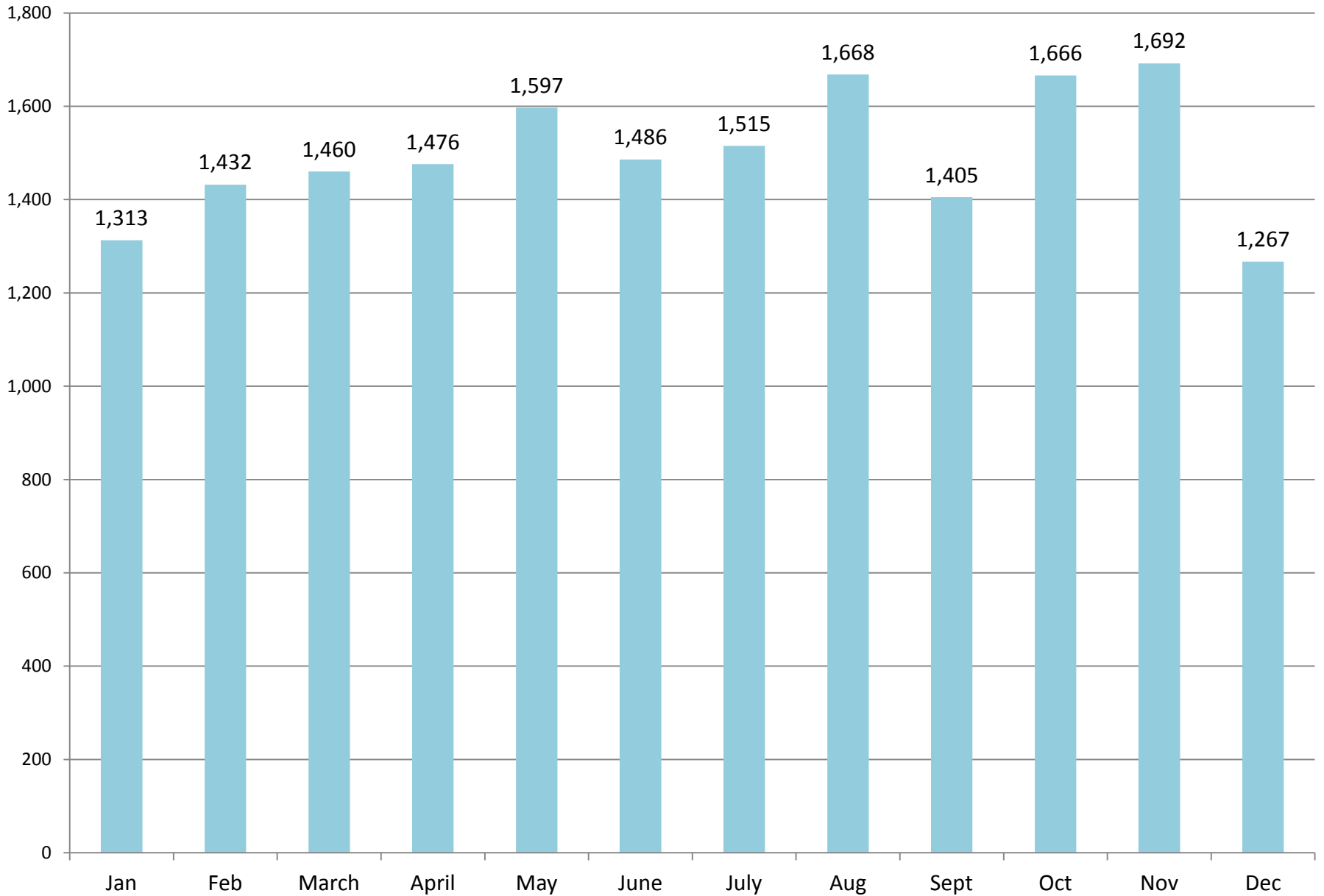
NOTE: July waste increase due to fresh produce from the warehouse received in moldy, went bad very quickly

2012 SHARED FOODS WITH AGENCIES



*April donation from Anderson Dairy of 8,480 pounds of milk (four pallets) split with Clark County Food Bank

2012 LOBBY VISITS



2012 NEW CLIENT TRENDS

■ New Clients ■ Household Members

